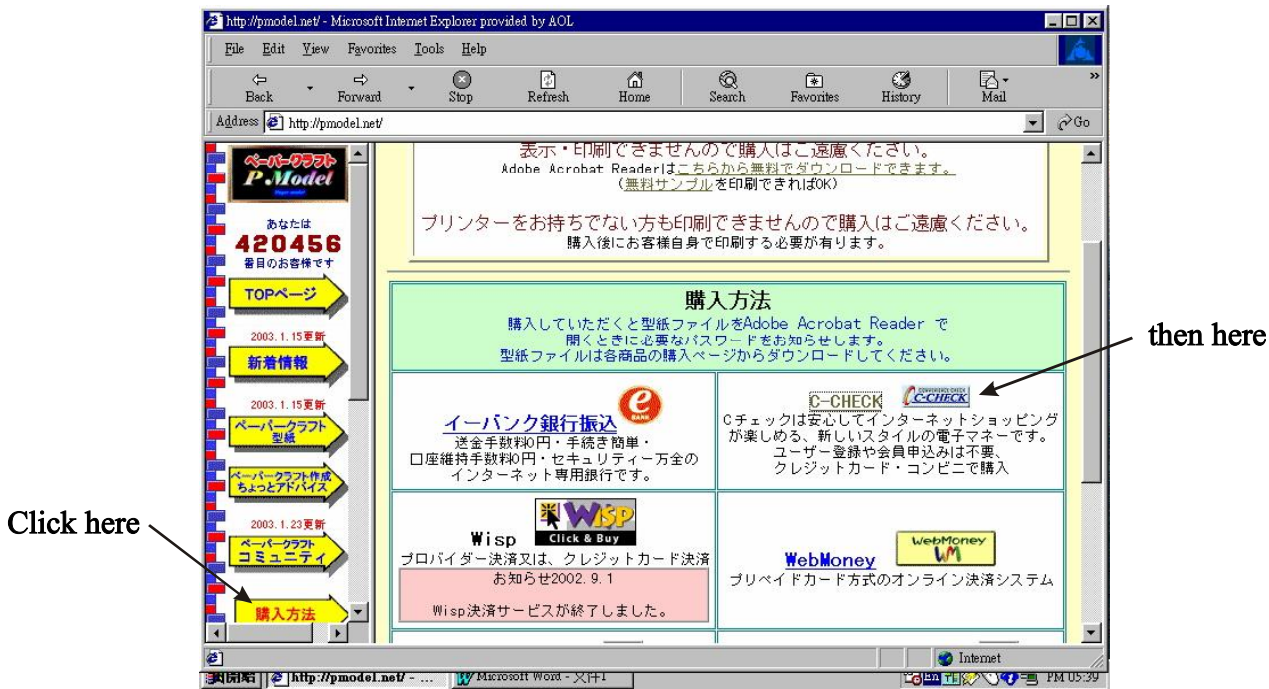


Web Page Location: <http://www.pmodel.net/>



When your account number arrives by email it will look like gobbledygook at first. Look at the string of characters that is sent and you will see that buried in the characters there are four groups of four digit numbers, the “numbers” are your account number, the rest can be discarded when entering your account number to purchase the models.

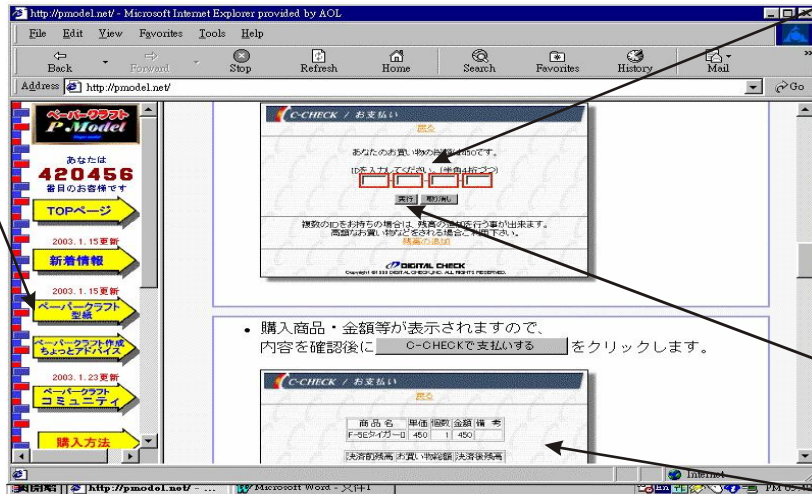
This is an example of the account number that you will receive in the email:

1111-2222\$@!] (J3333-4444

In this example the account number is 1111-2222-3333-4444.

Then go back to the P-Model main-page and select the paper craft page, third yellow arrow from the top.

Select the model you would like to purchase. And click the grey button to select the model for purchase. At the bottom of the page you select the C-Check as the method of payment. Which brings up the following C-Check account window.

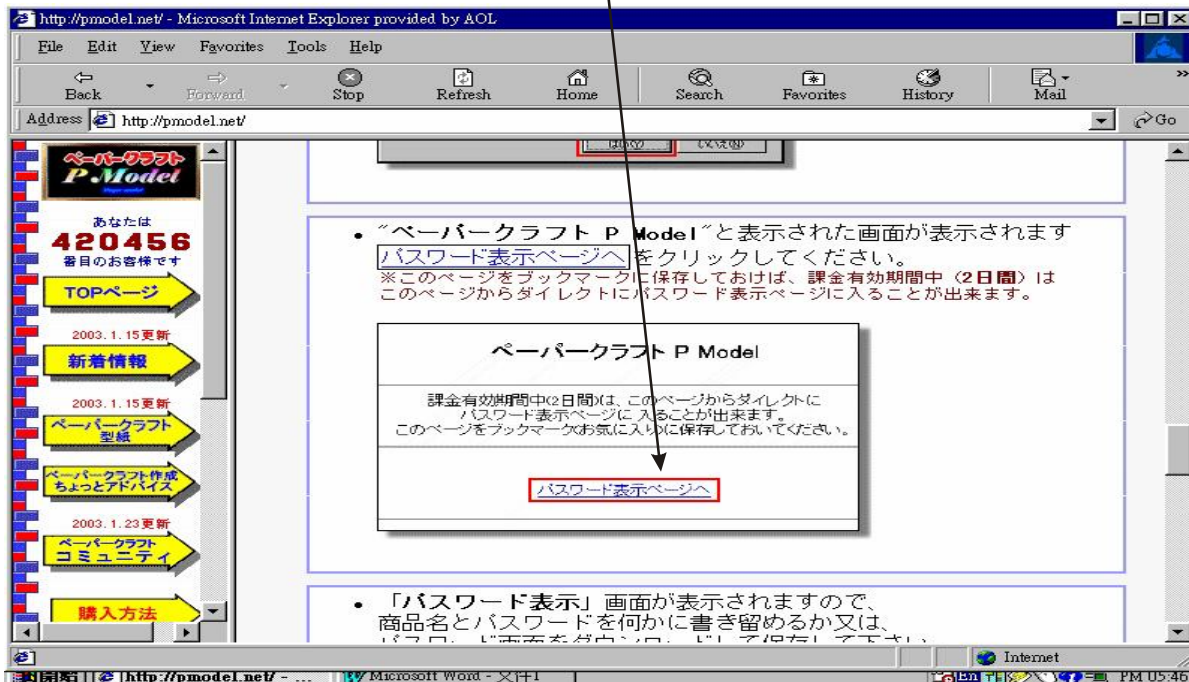


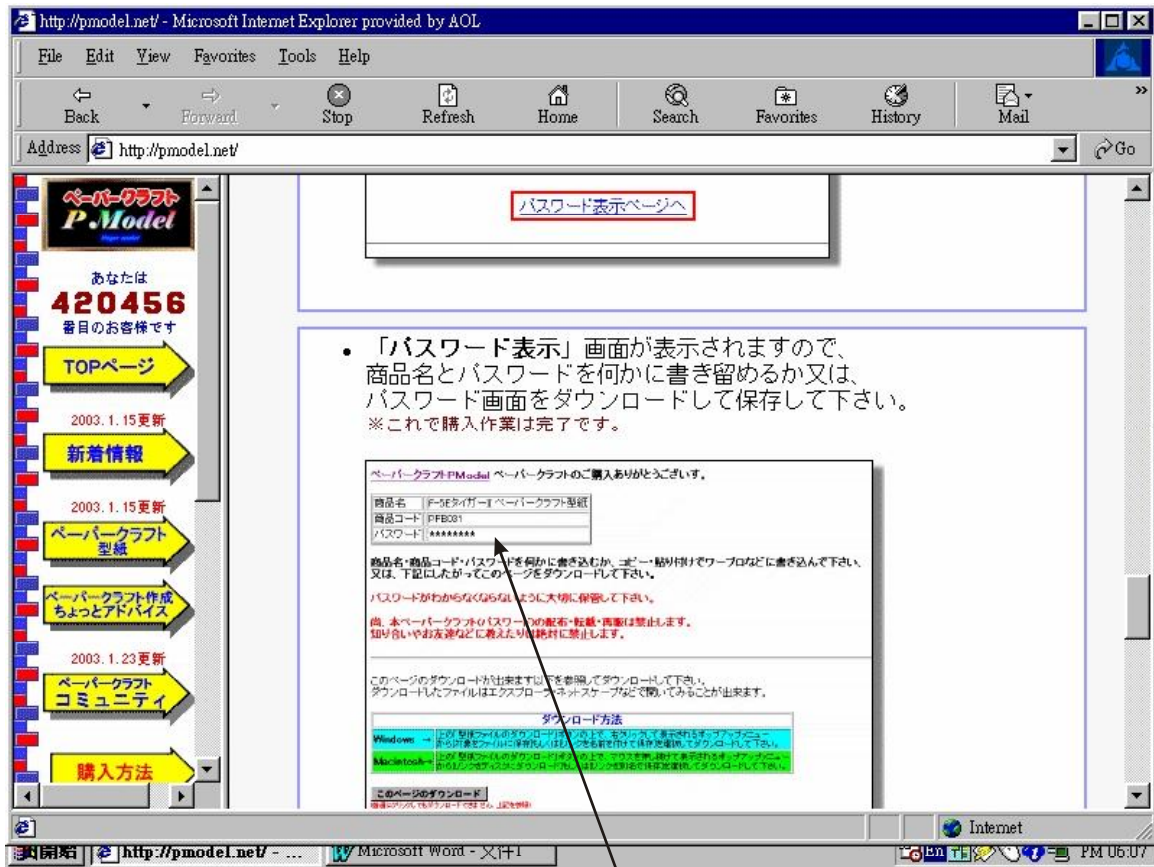
Enter your C-Check account number here.

Then click here to OK.

Your C-Check account info is displayed here. E.g.: how much money is left in your account after the purchase, etc.

Then click here to accept purchase.





Once you have the password go back to the model download page and select the model for download, the one you just purchased, each password is unique to the specific model being downloaded. Enter the password when asked by Acrobat Reader and the file should download then save to your hard drive for safe keeping and future reference and printing.

Finally this page is displayed with password in this box. You have two days from purchase date to display the password in this page. Just copy and paste password to a text file and save to a safe location on your hard drive since you need it every time you wish to open the pdf model file. Or just write down the password and keep it in a safe location.

Please note: these instructions assume that you already have the Adobe Japanese font pack installed, otherwise Acrobat Reader will not open the pdf model file.